

## Modeling of Carrot Firmness Based on Water Content and Total Soluble Solids

<sup>1</sup>Shahram Mohseni Niari and <sup>2</sup>Majid Rashidi

<sup>1</sup>Applied-Science Education Center of Ardabil Province Jihad-e-Keshavarzi, Ardabil, Iran

<sup>2</sup>Department of Agricultural Machinery, Takestan Branch, Islamic Azad University, Takestan, Iran

**Abstract:** Carrot firmness (FIR) is often determined using difficult and time consuming Laboratory tests, but it may be more appropriate and economical to develop a method which uses easily available and known quality characteristics of carrot such as water content (WC) and total soluble solids (TSS). In this study, a typical two variables linear regression model for predicting FIR of Nantes carrot based on WC and TSS of carrot was suggested. The statistical results of the study indicated that in order to predict carrot FIR based on WC and TSS of carrot the two variables linear regression model  $FIR = -2805.8 + 64.9 WC + 36.4 TSS$  with  $R^2 = 0.84$  can be strongly recommended.

**Key words:** Carrot • Modeling • Firmness • Water content • Total soluble solids

### INTRODUCTION

Carrot (*Daucus carota* L.) is an important vegetable because of its large yield per unit area throughout the world and its increasing importance as human food [1, 2]. It belongs to the family Umbelliferae. The carrot is believed to have originated in Asia and now under cultivation in many countries [3, 4]. It is orange-yellow in color, which adds attractiveness to foods on a plate and makes it rich in carotene, a precursor of vitamin A [5]. It contains abundant amounts of nutrients such as protein, carbohydrate, fiber, vitamin A, potassium, sodium, thiamine and riboflavin [1, 3, 6, 7] and is also high in sugar [8]. It is consumed fresh or cooked, either alone or with other vegetables, in the preparation of soups, stews, curries and pies. Fresh grated roots are used in salads and tender roots are pickled [9]. Its use increases resistance against the blood and eye diseases [3].

Fruits and vegetables contain large quantities of water in proportion to their weight. Vegetables generally contain 90-96% water while for fruits normally contain 80-90% water [10]. Carrot contains 75-88% water and 8.5-12.5% soluble solids [11-13]. Water content and soluble solids exert a profound influence on the storage period length, mechanical properties and quality characteristics of fruits and vegetables [9, 10, 12-16].

Therefore, the present study was mainly conducted to develop a regression model for predicting carrot firmness based on water content and total soluble solids of carrot.

### MATERIALS AND METHODS

**Plant Materials:** Carrots (cv. Nantes) were purchased from a local market in Karaj, Iran. They were visually inspected for freedom of defects and blemishes. Carrots were then washed with tap water and treated for the prevention of development of decay by dipping for 20 min at 20°C in 0.5 g L<sup>-1</sup> aqueous solution of iprodione and then air dried for approximately 1 h. After that, they were then transferred to the Laboratory and held at 5±1°C and 90±5% relative humidity until Laboratory tests.

**Experimental Procedure:** In order to obtain required data for determining regression model, water content, total soluble solids and firmness of seventy-five randomly selected carrots were measured using Laboratory tests (Table 1). Also, in order to verify regression model by comparing its results with those of the Laboratory tests, ten carrots were taken at random. Again, water content, total soluble solids and firmness of them were determined using Laboratory tests (Table 2).

Table 1: The mean values, standard deviation (S.D.) and coefficient of variation (C.V.) of water content (WC), total soluble solids (TSS) and firmness (FIR) of the seventy-five randomly selected carrots used to determine regression model

Parameter	Minimum	Maximum	Mean	S.D.	C.V. (%)
WC (%)	76.3	88.5	83.6	3.23	3.87
TSS (%)	8.60	12.3	9.83	1.05	10.6
FIR (N)	2543	3271	2975	195	6.57

Table 2: The mean values, standard deviation (S.D.) and coefficient of variation (C.V.) of water content (WC), total soluble solids (TSS) and firmness (FIR) of the ten randomly selected carrots used to verify regression model

Parameter	Minimum	Maximum	Mean	S.D.	C.V. (%)
WC (%)	75.6	88.5	83.3	3.84	4.61
TSS (%)	8.60	12.2	9.83	1.24	12.6
FIR (N)	2467	3271	2980	209	7.00

**Water Content (WC):** The WC of carrots was determined using the equation 1:

$$WC = 100 \times (M_1 - M_2) / M_1 \quad (1)$$

Where:

WC = Water content (%)

M<sub>1</sub> = Mass of sample before drying (g)

M<sub>2</sub> = Mass of sample after drying (g)

**Total Soluble Solids (TSS):** The TSS of carrots was measured using an ATC-1E hand-held refractometer (ATAGO, Japan) at temperature of 20°C.

**Firmness (FIR):** The FIR of carrots was analyzed using a Hounsfield texture analyzer (Hounsfield Corp. UK). The test used was a shear or cut test on the 50 g carrot pieces closely placed into a 6×6×6 cm test box with 8 chisel knife blades. The variations in carrots size and geometry were minimized by testing the pieces of same thickness from the carrots. The test mode used for the texture analysis was “Force in Compression”. A 5000 N load cell, test speed of 10 cm min<sup>-1</sup> and post-test speed 60 cm min<sup>-1</sup> were used. The “Trigger Type” was set to “Button” and distance to be traveled was set to 68 mm. The cutting force range was set to 2000-3400 N and the maximum cutting force measured during each test was considered as carrot FIR.

**Regression Model:** A typical two variables linear regression model is shown in equation 2:

$$Y = k_0 + k_1X_1 + k_2X_2 \quad (2)$$

Where:

Y = Dependent variable, for example FIR of carrot

X<sub>1</sub>, X<sub>2</sub> = Independent variables, for example WC and TSS of carrot

k<sub>0</sub>, k<sub>1</sub>, k<sub>2</sub> = Regression coefficients

In order to predict carrot FIR based on WC and TSS of carrot the two variables linear regression model  $FIR = k_0 + k_1WC + k_2TSS$  was suggested.

**Statistical Analysis:** A paired sample t-test and the mean difference confidence interval approach were used to compare the FIR values predicted using the model with the FIR values measured by Laboratory tests. The Bland-Altman approach [17] was also used to plot the agreement between the FIR values measured by Laboratory tests with the FIR values predicted using the model. The statistical analyses were performed using Microsoft Excel 2007.

## RESULTS AND DISCUSSION

The two variables linear regression model, p-value of independent variables and coefficient of determination (R<sup>2</sup>) of the model are shown in Table 3. In this model carrot FIR can be predicted as a function of carrot WC and TSS. The p-value of independent variables (WC and TSS) and coefficient of determination (R<sup>2</sup>) of the model were 8.01E-10, 0.188209 and 0.84, respectively. Based on the statistical result, the model was judged acceptable.

Moreover, a paired samples t-test and the mean difference confidence interval approach were used to compare the FIR values predicted using the model and the FIR values measured by Laboratory tests. The Bland-Altman approach [17] was also used to plot the agreement between the FIR values measured by Laboratory tests with the FIR values predicted using the model. The FIR values predicted by the model were compared with FIR values determined by Laboratory tests and are shown in Table 4. A plot of the FIR values determined by the model and Laboratory tests with the line of equality (1.0: 1.0) is shown in Fig. 1. The mean FIR difference between two methods was -16.6 N (95% confidence intervals for the difference in means: -88.4 N and 55.2 N; P = 0.6135). The standard deviation of the FIR differences was 100.3 N. The paired samples t-test results showed that the FIR values predicted with the model were not significantly different than that measured

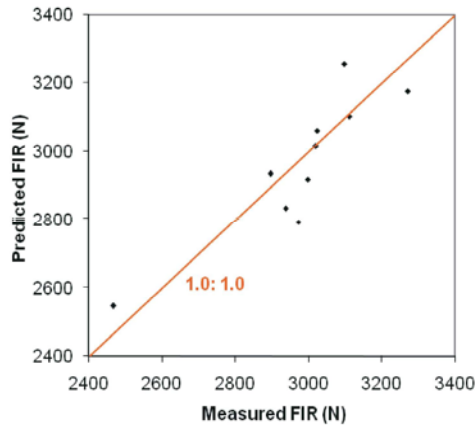


Fig. 1: Measured FIR and predicted FIR using the model with the line of equality (1.0: 1.0)

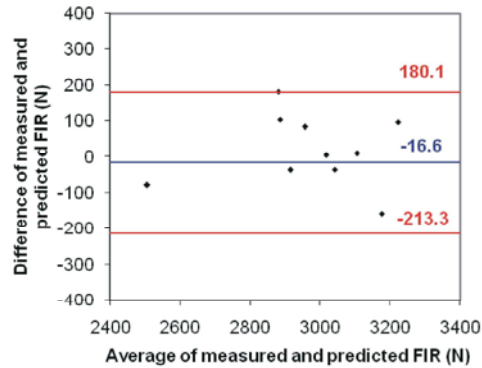


Fig. 2: Bland-Altman plot for the comparison of measured FIR and predicted FIR using the model; the outer lines indicate the 95% limits of agreement (-213.3, 180.1) and the center line shows the average difference (-16.6)

Table 3: The two variables linear regression model, p-value of independent variables and coefficient of determination ( $R^2$ ) of the model

Model	p-value of independent variables		$R^2$
	WC	TSS	
FIR = -2805.8 + 64.9 WC + 36.4 TSS	8.01E-10	0.188209	0.84

with Laboratory tests. The FIR differences between two methods were normally distributed and 95% of these differences were expected to lie between  $\mu - 1.96\sigma$  and  $\mu + 1.96\sigma$ , known as 95% limits of agreement [11-13, 17-20]. The 95% limits of agreement for comparison of FIR determined with Laboratory test and the model was calculated at -213.3 N and 180.1 N (Fig. 2). Thus, FIR predicted by the model may be 213.3 N lower or 180.1 N

Table 4: Water content (WC), total soluble solids (TSS) and firmness (FIR) of the ten randomly selected carrots used in evaluating the model

Sample No.	WC (%)	TSS (%)	FIR (N)	
			Laboratory tests	Model
1	75.6	12.2	2467	2546
2	80.0	11.0	2972	2792
3	81.0	10.4	2938	2834
4	82.3	10.9	2896	2934
5	82.7	9.70	2999	2916
6	84.5	9.20	3020	3016
7	85.4	8.80	3024	3060
8	86.1	8.80	3112	3102
9	87.2	8.70	3271	3175
10	88.5	8.60	3097	3255

higher than FIR measured by Laboratory test. The average percentage differences for FIR prediction using the model and Laboratory tests was 2.7%.

## CONCLUSIONS

A typical two variables linear regression model was used to predict carrot firmness (FIR) based on water content (WC) and total soluble solids (TSS) of carrot. The FIR values predicted using the model was compared to the FIR values measured by Laboratory tests. The difference between two methods was not statistically significant ( $P > 0.05$ ). Therefore, the two variables linear regression model  $FIR = -2805.8 + 64.9 WC + 36.4 TSS$  with  $R^2 = 0.84$  provides a simple, rapid and economical method to predict carrot firmness based on easily available and known quality characteristics of carrot, i.e. total soluble solids and water content.

## REFERENCES

- Ahmad, B., S. Hassan and K. Bakhsh, 2005. Factors affecting yield and profitability of carrot in two districts of Punjab. *Int. J. Agric. Biol.*, 7: 794-798.
- Rashidi, M. and M.H. Bahri, 2009. Interactive effects of relative humidity, coating method and storage period on quality of carrot (cv. Nantes) during cold storage. *ARPN J. Agric. Biol. Sci.*, 4: 26-34.
- Hassan, I., K. Bakhsh, M.H. Salik, M. Khalil and N. Ahmad, 2005. Determination of factors contributing towards the yield of carrot in Faisalabad (Pakistan). *Int. J. Agric. Biol.*, 7: 323-324.
- Rashidi, M. and M.H. Bahri, 2009. Interactive effects of coating method and storage period on quality of carrot (cv. Nantes) during ambient storage. *ARPN J. Agric. Biol. Sci.*, 4: 29-35.

5. Bahri, M.H. and M. Rashidi, 2009. Effects of coating methods and storage periods on some qualitative characteristics of carrot during ambient storage. *Int. J. Agric. Biol.*, 11: 443-447.
6. Rashidi, M., M.H. Bahri and B.G. Khabbaz, 2009. Effects of coating methods and storage periods on some quality characteristics of carrot during ambient storage. In: *Proc. of Biennial Conference of the Australian Society for Engineering in Agriculture (SEAg)*, 13-16 September 2009, Brisbane, QLD, Australia.
7. Rashidi, M., M.H. Bahri and S. Abbassi, 2009. Effects of relative humidity, coating methods and storage periods on some qualitative characteristics of carrot during cold storage. *American-Eurasian J. Agric. & Environ. Sci.*, 5: 359-367.
8. Suojala, T., 2000. Variation in sugar content and composition of carrot storage roots at harvest and during storage. *Sci. Hort.*, 85: 1-19.
9. Sharma, H.K., J. Kaur, B.C. Sarkar, C. Singh, B. Singh, A.A. Shitandi, 2006. Optimization of pretreatment conditions of carrots to maximize juice recovery by response surface methodology. *J. Eng. Sci. Tech.*, 1: 158-165.
10. Mohsenin, N.N., 1986. *Physical Properties of Food and Agricultural Materials*. Gordon and Breach Science Publishers, NY, U.S.A.
11. Rashidi, M. and B.G. Khabbaz, 2010. Prediction of total soluble solids and firmness of carrot based on carrot water content. In: *Proc. of XVII<sup>th</sup> World Congress of the International Commission of Agricultural and Biosystems Engineering (CIGR)*, Hosted by the Canadian Society for Bioengineering (CSBE/SCGAB), 13-17 June 2010, Quebec City, Canada.
12. Rashidi, M., I. Ranjbar, M. Gholami and S. Abbassi, 2010. Prediction of carrot firmness based on carrot water content. *American-Eurasian J. Agric. & Environ. Sci.*, 7: 402-405.
13. Rashidi, M., I. Ranjbar, M. Gholami and S. Abbassi, 2010. Prediction of carrot total soluble solids based on carrot water content. *American-Eurasian J. Agric. & Environ. Sci.*, 7: 366-369.
14. Hussain, I., S.N. Gilani, M.R. Khan, M.T. Khan and I. Shakir, 2005. Varietal suitability and storage stability of mango squash. *Int. J. Agric. Biol.*, 7: 1038-1039.
15. Mostofi, Y. and P.M.A. Toivonen, 2006. Effects of storage conditions and 1-methylcyclopropene on some qualitative characteristics of tomato fruits. *Int. J. Agric. Biol.*, 8: 93-96.
16. Ullah, H., S. Ahmad, R. Anwar and A.K. Thompson, 2006. Effect of high humidity and water on storage life and quality of bananas. *Int. J. Agric. Biol.*, 8: 828-831.
17. Bland, J.M. and D.G. Altman, 1999. Measuring agreement in method comparison studies. *Stat. Methods Med. Res.*, 8: 135-160.
18. Koc, A.B., 2007. Determination of watermelon volume using ellipsoid approximation and image processing. *J. Postharvest Biol. Technol.*, 45: 366-371.
19. Rashidi, M. and M. Gholami, 2008. Determination of kiwifruit volume using ellipsoid approximation and image-processing methods. *Int. J. Agric. Biol.*, 10: 375-380.
20. Rashidi, M. and M. Seilsepour, 2009. Total nitrogen pedotransfer function for calcareous soils of Varamin region. *Int. J. Agric. Biol.*, 11: 89-92.